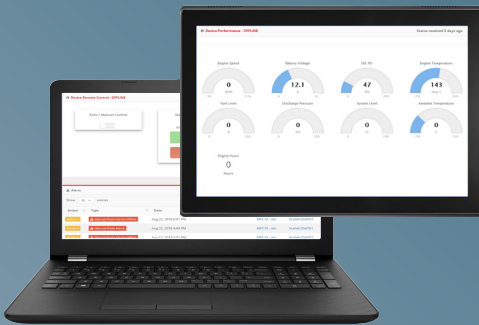


# EdgePoint Mobile

The EdgePoint Mobile has been designed for demanding engine-mounted and automotive applications. The GNSS, cellular connectivity and CAN channel allows the EdgePoint Mobile to support traditional fleet tracking and telematics applications. The included Ethernet and Wi-Fi connections allow it to become a full router and Wi-Fi hotspot for tablet computers and handheld devices.



The RS-232, RS-485, Dallas 1-Wire and I/Os connect to most sensors and control networks. Options for Zigbee, Thread, Bluetooth and proprietary 900MHz radios allow the EdgePoint Mobile to act as a gateway to connect low power wireless networks to the cloud. The IP69 enclosure and voltage protection make it rugged enough to survive demanding environments.



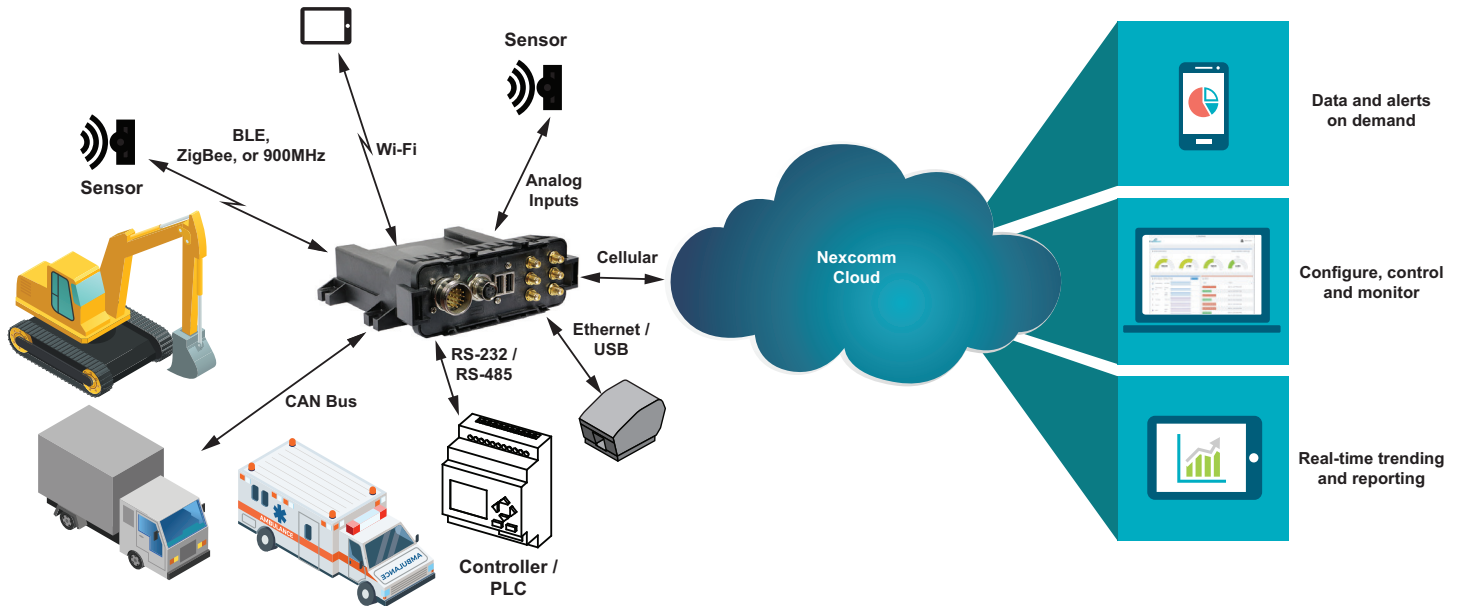
The full range of connectivity make the EdgePoint Mobile a true workhorse for vehicle and industrial applications.

## Benefits

- GNSS location services and CAN channel to support traditional telematics features.
- USB, Wi-Fi and Ethernet support tablets and peripheral devices.
- RS-485 and RS-232 ports for communications with ECUs or other equipment.
- CAT-M1 LTE cellular connection offers better range and power management than traditional CAT-1 or CAT-4 links.
- Optional Bluetooth Low Energy, proprietary 900MHz, ZigBee or Thread wireless connections.
- Reverse polarity and load dump protected.
- Rugged IP69 enclosure with flange mounts for easy addition to devices.
- Nexcomm Cloud services are available, or the system can forward data to a customer's existing cloud services.
- Custom labeling and packaging are available.



501 Hobbs Street  
Tampa, FL 33619  
www.nexcommsys.com  
(813) 302-7131



## EdgePoint Mobile Specifications

### Electrical

Operating Voltage: 9 to 36VDC, reverse polarity protected, protected to 60V

### Communications:

One CAN bus channel  
 One RS-485 Modbus channel  
 One RS-232 channel

One 10/100 ethernet port  
 Two USB 2.0 ports  
 One Dallas 1-Wire channel

### Radios

Wi-Fi: 802.11 b/g/n  
 Cellular: LTE, CAT-M1  
 GNSS location services  
 ZigBee, Thread, Bluetooth, proprietary 900MHz, Active or passive RFID (options)

### Inputs

Four 0-10V analog or digital

### Environmental

Operating temperature: -40°C to +85°C (-40°F to +185°F)

### Mechanical

3.20 x 4.13 x 1.20 inches (81.28 x 104.90 x 30.48mm) with mounting flange  
 IP69

### Other

3-axis accelerometer

### CPU

Qualcomm Atheros AR9331 Chipset (MIPS 24Kc architecture) at 400MHz  
 16MB Flash (total), 64MB RAM  
 OpenWRT Operating System

